

EUREKA



ES Manual de instrucciones

PT Manual de instruções

IT Manuale di istruzioni

GB Instructions' manual

FR Manuel d'instructions

DE Bedienungsanleitung

NL Gebruiksaanwijzing

RU ИНСТРУКЦИИ ПО УСТАНОВКЕ И ЭКСПЛУАТАЦИИ

HU Kezelési, karbantartási és használati utasítás

CZ Návod k použití

Thank you for choosing this Eureka Open Outlet Water Heater.

This Manual will provide you with all the information required to install and maintain your Eureka Open Outlet Water Heater and also provides suggestions which will help you to obtain the best performance from your appliance.

The Eureka Open Outlet Water Heater is:

SAFE

All of its components are completely waterproof (IP 25D Certified).

EASY TO USE

Due to its ceramic disc mixer.

ENVIRONMENTALLY FRIENDLY

The appliance and all of its packaging is fully recyclable.

RELIABLE AND DURABLE

It is made with the highest quality materials and the tank is made of a special plastic.

PLEASE ENSURE YOU READ THE GUARANTEE

Legend (fig. 1)

- | | |
|------------------------------|---|
| 1) Heating warning light | 9) Waterpipe |
| 2) Illuminated on/off switch | 10) Waterpipe support |
| 3) Water inlet connection | 11) Electrical supply cable |
| 4) Water outlet connection | 12) Outlet spout |
| 5) Cover | 13) Safety valve |
| 6) Lever for mixing valve | 14) Nonreturn valve (only if supplied with the appliance) |
| 7) Mounting Bracket | |
| 8) Integral fixing hook | |

IMPORTANT INSTRUCTIONS

The installation of the appliance is at the expense of the purchaser.

The manufacturer declines any liability from damage caused by improper installation or failure to comply with the instructions contained in this manual.

In particular you should ensure:

1. That the electrical and water connections are made with the instructions provided in this manual and also all relevant IEE and Water Bylaw regulations.
2. Only original spares are used.

Location of the Eureka Open Outlet Water Heater

The Eureka can be installed both indoors and outdoors and should be installed to the relevant Bylaws.

The Eureka has a degree of protection against penetration of liquids of IP 25 D and can be installed anywhere provided that:

- a) It is not installed in a bathtub or prefabricated shower cubical.
- b) It is connected by means of the cable to a protected socket with a differential circuit breaker placed at more than 1.2 m from the appliance.

INSTALLATION INSTRUCTIONS

1. Wall Mounting (Fig. 2)

- a) Fix the support bracket (7) to the wall using the screws supplied as shown in fig. 2.
- b) Fit the hook on the back of the Eureka (8) into the guide of the bracket (7).
- c) Pull the Eureka downwards fully until it fits correctly into place.

2. Water Connections (Fig. 3)

WARNING - This appliance is of the Open Outlet type. Therefore only the spout and safety valve (13) (counter clockwise) supplied must be used. The outlet spout is used to discharge any expanded water, consequently no restrictive device must be connected to it.

N.B. If the mains water pressure is over 3 bar then a suitable pressure reducing valve must be fitted.

- a) Connect mains water supply to inlet pipe (3) using pipe manufactured of a suitable material. (I.E. copper).
- b) Connect the spout to the outlet connection.

3. Electrical Connections

- a) Ensure that the mains voltage complies with the value shown on the data badge of the appliance i.e. 230/240 volts.
- b) Connect via the cable supplied to a switched spur (dual pole 3 mm contacts fused at 13 amp) as follows:

L - Brown
N - Blue
E - Green/Yellow

N. B. If your Eureka has been supplied with a continental style moulded plug it must be removed.

4. Commissioning (Fig. 1)

- a) Turn on water supply to the appliance.

- b) Pull mixer lever (6) upwards to the on position then turn to the right to the hot position.
- c) Wait until water flows from the spout.
- d) Push mixer lever (6) downwards to the off position.
- e) Press the on/off switch (2) and ensure that the heating warning light (1) is on and the on/off light (2) is on.

The waterheater Eureka is now ready to use.

USER INSTRUCTIONS (Fig. 1)

1. How to turn the water heater on

- a) Press the on/off switch (2) and check that it is on.
- b) Check that the heating warning light (1) is on. This light will come on when the heater is in the heating mode.
- c) When the water in the heater reaches the preset temperature, the thermostat deactivates the heating element automatically and turns off his light.

IMPORTANT - This appliance is of the Open Outlet type, therefore, the spout will drip slightly during the heating mode.

2. How to use the Eureka

- a) Place mixer lever (6) into the required position.
- b) Pull lever forward to allow flow of water.
- c) Adjust temperature of the water by adjusting the position of the lever.

IMPORTANT - During the heating mode the tank of the heater will expand. This is due to the elasticity of the materials used in its construction.

Maintenance to be carried out by a qualified Technician (Fig. 1)

IMPORTANT - Before carrying out any maintenance ensure that you:

- a) Isolate electricity at mains isolator.
- b) Turn off water supply to the heater.

Access to electrical components (Fig. 3)

- a) Lift off cover knob A
- b) Remove screw B
- c) Remove knob C
- d) Unscrew retention ring D
- e) Remove gasket E
- f) Unscrew safety valve (13)
- g) Unscrew ring nuts F and remove cover G

Power cable removal and replacement

- a) Remove cover (G) as previously described
- b) Disconnect the live neutral and earth connections
- c) Remove cable by pulling it through its retaining grommet at the rear of the heater
- d) Replace cable in reverse order

Replacement of Thermostat

- a) Remove cover (G)
- b) Disconnect terminals N and O
- c) Pull thermostat downwards and remove
- d) Reassemble in reverse order

Replacement of Element

- a) Remove thermostat
- b) Unscrew ring nut H and disconnect flange unit L
- c) Remove screw U
- d) Remove element by gently pulling away from the flange
- e) Reassemble in reverse order

To ensure the proper performance of our appliance descale the heating element 5 (fig. 3) at least once every two years. Carefully break away the scale without damaging the plating of the heating element.

Safety cut-out reset: (Fig. 5)

When there is an anomaly in heating the water, a (CEI-EN approved) safety cut-out, will cut the circuit out on both poles to the heating element.

In order to reactivate the water heater from the mains power supply (11) and let the water cool down.

Once the water is cold take out screw (15) and cover (14) using a Philips Screwdriver and apply pressure on point (16) of the thermostat until a click sound is heard.

Close the cover (14) with screws (15), connect the water heater to power supply and (11), push the button (2). Be sure power supply is on (1) (Fig. 1).

Regulating water temperature

The Thermostat is factory set at its maximum. Water outlet temperature is regulated by adjusting the mixer lever. The lever is marked with indicators showing which direction either increases or decreases the temperature.

TROUBLE SHOOTING

No hot water supply from the spout

- a) Check that the water connection has been made in accordance to manufacturers instructions.
- b) Check that the electrical connections have been made in accordance with manufacturers instructions.
- c) Check spout for scale build-up.
- d) Call your local service centre.

The heating element does not heat up

- a) Check that the electrical connections have been made in accordance with manufacturers instructions.
- b) Check fuses in the mains supply.
- c) Call your local service centre.

The heaters tank expands during heating

This is quite normal and is caused by the elasticity of the material used in the tanks constructions.

The spout drips during the heating sequence

This is normal and is due to the fact that this is not a pressure appliance. Do not attempt to block up the spout or adjust the mixer.

Neither the heating warning light nor the on/off switch are alright when hot water is being drawn off

- a) Failure of the relevant light and should be replaced.
- b) Check fuse at spur.

The spout drips when the mixer is turned off

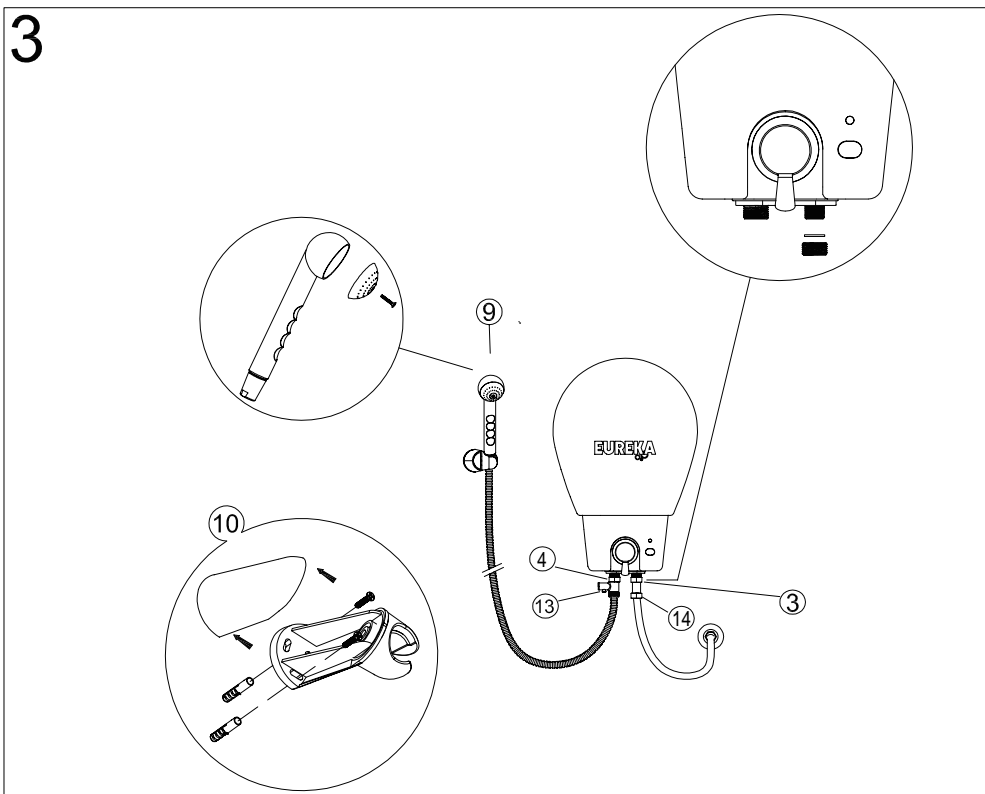
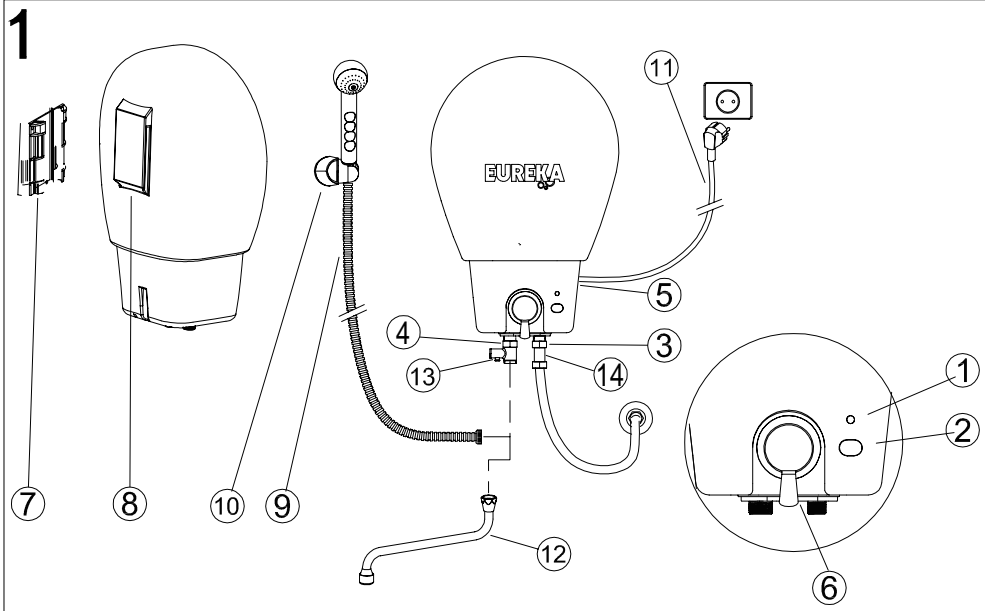
This dripping is caused by an adjustment of the internal pressure of the appliance.

MTS (GB) Limited
MTS Building
Hughenden Avenue
High Wycombe
Bucks. HP13 5FT
Tel. (01494) 459711

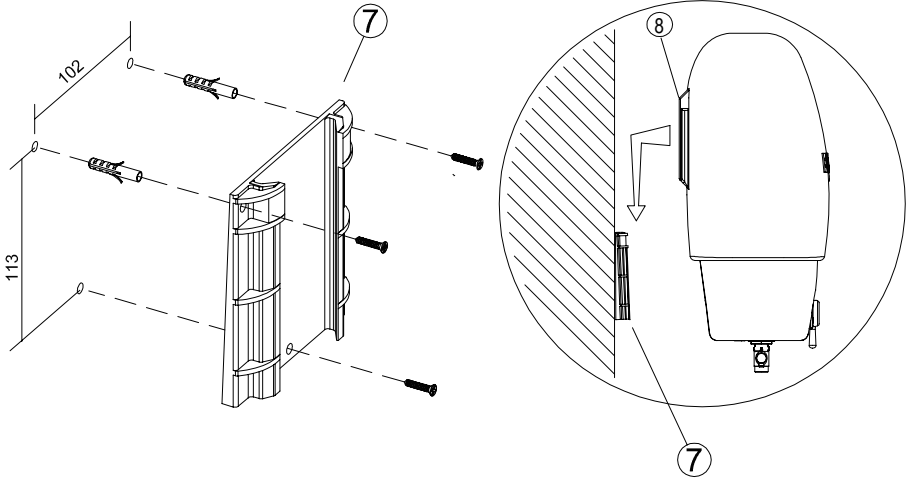


This product conforms to EU Directive 2002/96/EC.

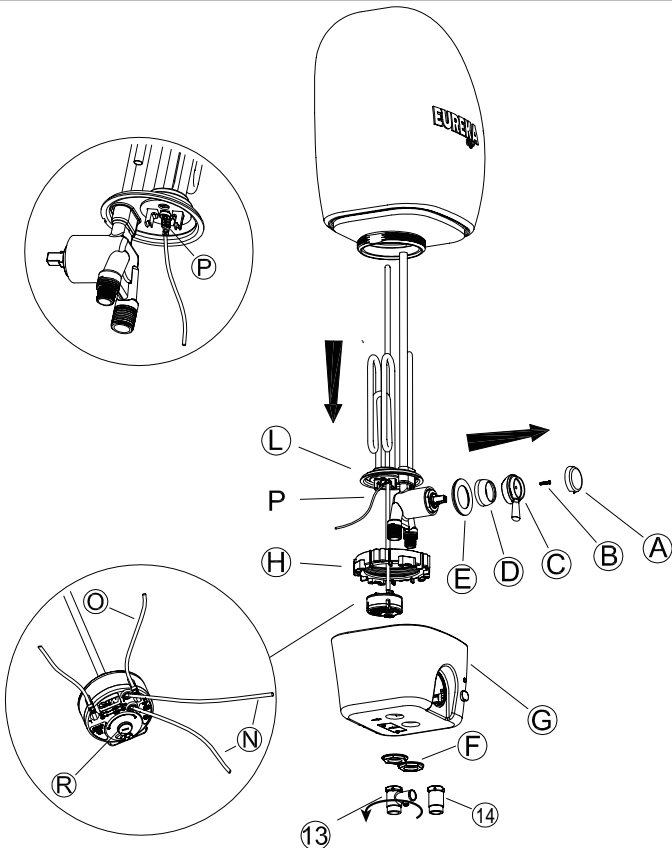
The symbol of the crossed waste paper basket on the appliance indicates that at the end of its working life the product should be disposed of separately from normal domestic household rubbish, it must be disposed of at a waste disposal centre with dedicated facilities for electric and electronic appliances or returned to the retailer when a new replacement product is purchased. The user is responsible for the disposal of the product at the end of its life at an appropriate waste disposal centre. The waste disposal centre (using special treatment and recycling processes effectively dismantles and disposes of the appliance) helps to protect the environment by recycling the material from which the product is made. For further information about waste disposal systems visit your local waste disposal centre or the retailer from which the product was purchased.



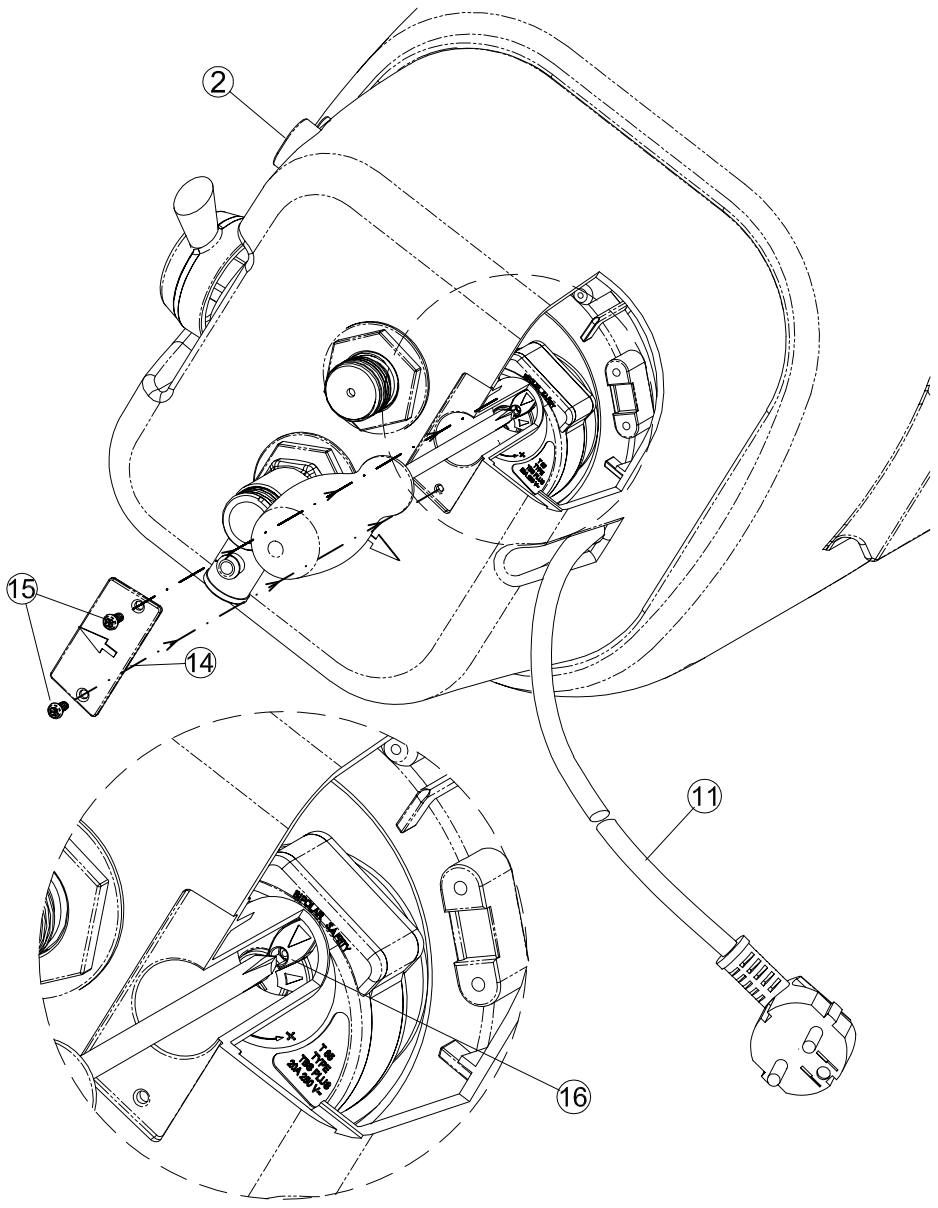
2



4



5



6

