

Zip HydroTap® G4 with CLASSIC Tap

Boiling | **Chilled** | **Filtered** | **Instantly**

Residential model DOMBC4 (HT1784UK), with new Zip G4 power-saving technology and Zip 0.2 micron filtration.



New under-sink Zip G4 Command-Centre™ leads the world in energy-saving technology, has a pin-code protected touch-screen to simplify adjustments and automatically monitors performance to give an operating history, if ever required.

HydroTap can be sited at the sink (shown in the inset picture on the left), or on an optional front and drain (shown in the main picture).

Boiling and chilled filtered water, instantly, at a fraction of the cost of bottled water.

Features & Benefits

- Superior G4 insulation reduces standby energy consumption
- Power-Pulse™ technology maintains boiling water within 2°C of set temperature.
- Boiling system is open outlet, vented; factory set to operate at 98°C.
- 'Sleeps' or 'powers-off', after 2 hours of non-use to minimise daily power consumption.
- Automatically 'sleeps' when kitchen goes dark.
- Integral 24/7 automatic timer to fit in with the user's lifestyle.
- Adjustable boiling temperature set point.

Using the tap

- Choice of fingertip control for fast cup filling or lever lock for hands-free filling of large vessels.
- Special 'finger-thumb' operation can be used to prevent accidental access to boiling water.
- System can be set to 'boiling isolation' mode.

Healthier drinking

- Integral 0.2 micron NSF certified filtration system for healthier drinking water, eliminates the bad taste and odour of chlorine, heavy metals and impurities as tiny as one five-thousandth of a millimetre, but leaves beneficial flouride.
- Free-Flow™ bottle filling, for continual supply of filtered water, even when chilled capacity is exceeded.

Typical specification

Under-sink instant boiling, chilled, filtered water system, equipped with:

Two-way lever action, electronic tap head.

Integral 5 bar pressure limiting and dual check valve.

NSF certified 0.2 micron filter.

Air-cooled refrigeration system with cleanable lint filter.

Full colour, interactive, touch screen control panel, with pin protection.

Two boiling water safety modes.

Three energy saving modes, including sensor activated 'sleep when dark' function.

BOILING | CHILLED | SPARKLING



Zip HydroTap® G4 with CLASSIC Tap

Boiling | Chilled | Filtered | Instantly

Existing code	Tap finish	New code	Boiling	Chilled	Sparkling	Ambient	Mixed hot & cold	Rating (kW @ 230V)	Dimensions W x D x H (mm)
DOMBC4	Bright Chrome	HT1784UK	Y	Y	N	N	N	1.55	280 x 470 x 335
DOMBC4S	Brushed Chrome	HT1784Z1UK	Y	Y	N	N	N	1.55	280 x 470 x 335
DOMBC4B	Gloss Black	HT1784Z2UK	Y	Y	N	N	N	1.55	280 x 470 x 335
DOMBC4M	Matt Black	HT1784Z3UK	Y	Y	N	N	N	1.55	280 x 470 x 335

Order code shown here is for the model installed on a sink. To install on a 'font' also specify a font kit: See 'Accessories' below

Boiling System

Open outlet, vented system, factory set to operate at 98°C.

Flow rate 4.0 l/min.

Chilling System

Fan-cooled condenser type, factory set to operate at 6-10°C.

Flow rate above 1.7 bar water supply pressure.

Chilled 4.0 l/min.

Refrigerant R134a.

Location

Tap must be positioned so that it drains into a suitable sink, or be installed on the optional "tap font kit" which is plumbed to waste.

Tap should be situated within 1 metre of and directly above, the under-sink Command Centre™. Maximum distance from the base of the tap to the Command Centre™ is 1 metre. Command Centre™ must have clearances as shown on the drawings.

Ventilation accessories (supplied) must be installed as per instructions.

Approvals

CE endorsed. WRAS approved.

Plumbing

Must be installed in accordance with UK Water Supply Regulations.

Designed for direct connection to a potable (drinkable) cold water supply with a minimum pressure of 1.7 bar. A 5 bar pressure limiting valve is fitted internally.

An isolating valve should be installed between the water supply and the Command Centre™.

Electrical

Installation must comply with current IEE regulations.

Connect to a 13 amp socket.

Caution

In hard water areas where mineral scale accumulation may be an issue, consideration should be given to the maintenance required.

We recommend use of the Zip Professional high performance limescale filtration system.

Accessories

- Zip G4 font kit: Bright Chrome ZT008
- Brushed Chrome ZT009
- Gloss Black ZT010
- Matt Black ZT012

- ZT402 – Zip 0.2 micron replacement filter.
- FL1100G4 KIT – Scale filtration kit.



For oversize extension levers and Braille pads, add D to the end of the order code

Technical Support

Contact Zip on:

Tel: 0845 6 005 005 / 0345 6 005 005

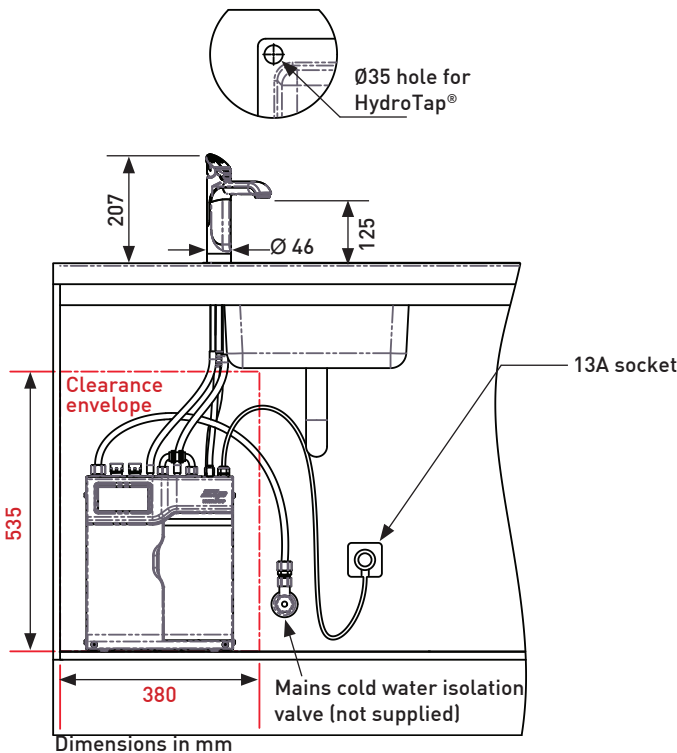
e-mail: service@zipindustries.co.uk

Five Year Warranty

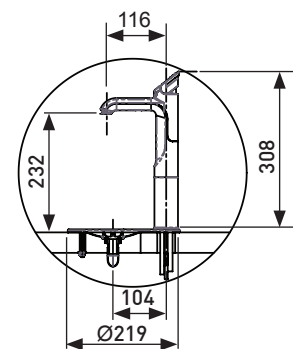
Appliance warranty 36 months, plus additional 24 months boiling tank warranty.



Sink detail



Font detail



Font Cutouts

